



De La Salle School

KS4 Course Booklet 2025-2027



This booklet contains details about the courses on offer for your child from September 2025.

The beginning sections contains the core subjects that everyone studies. Please read this booklet carefully and discuss as a family. Students should select their options using SIMS Options Online.

All forms must be returned by 19th March 2025

If you require careers advice, please contact Mrs Scully (nicola.scully@careerconnect.org.uk)

For information about subjects, please encourage your child to speak to their teacher(s) in the first instance.

Core Subjects

English Literature

English Language

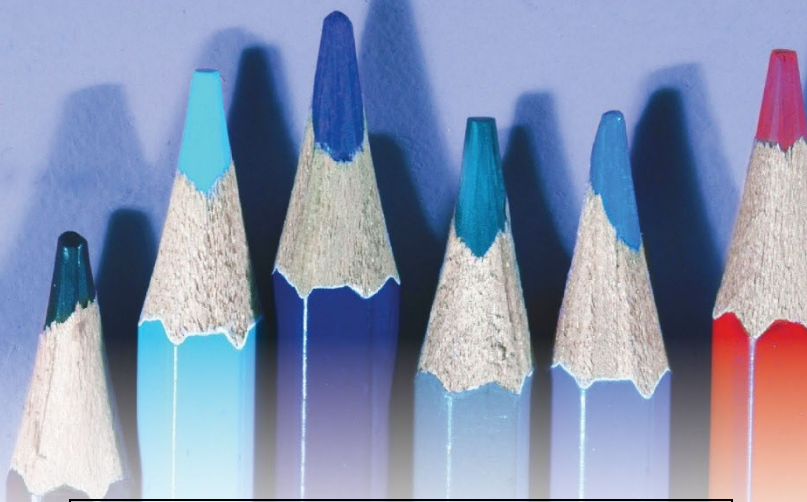
Mathematics

Science

Religious Education

English Literature

GCSE



COURSE INFORMATION

You will sit two examinations:

Paper One - Shakespeare and the Nineteenth Century Novel – Worth 40% of the GCSE

Section A – Macbeth

Section B – The Sign of Four

Paper Two - Modern Texts and Poetry – Worth 60% of the GCSE

Section A – An Inspector Calls

Section B – Poetry Anthology

Section C – Unseen Poetry

ASSESSMENT REQUIREMENTS

The exams will measure how students have achieved the following assessment objectives.

- AO1: Read, understand and respond to texts. Students should be able to maintain a critical style and develop an informed personal response and use textual references, including quotations, to support and illustrate interpretations.
- AO2: Analyse the language, form and structure used by a writer to create meanings and effects, using relevant subject terminology where appropriate.
- AO3: Show understanding of the relationships between texts and the contexts in which they were written.
- AO4: Use a range of vocabulary and sentence structures for clarity, purpose and effect, with accurate spelling & punctuation.

BENEFITS OF STUDYING THIS COURSE

Studying this course will enable you to develop the following skills:

- literal and inferential comprehension
- critical reading
- evaluation of a writer's choice of vocabulary, grammatical and structural features
- comparing texts

ADDITIONAL INFORMATION

We use the AQA syllabus.

Useful websites:

www.aqa.org.uk

www.bcbitesize.com

www.sparknotes.com

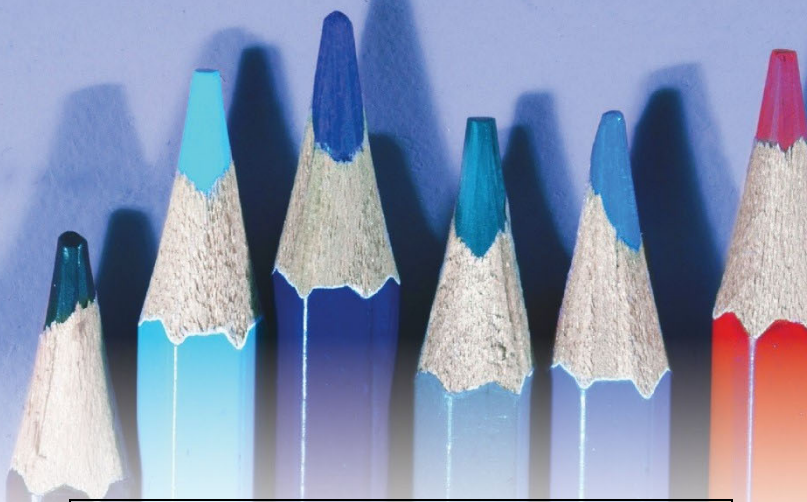
www.genius.com

www.poemhunter.com

www.physicsandmathstutor.com

Mr Bruff is a teacher with a YouTube channel and has a wealth of video resources to support all aspects of this course.

English Language GCSE



COURSE INFORMATION

Studying this course will enable you to develop the following skills:

- the ability to read fluently, and with good understanding, a wide range of texts from the 19th, 20th and 21st centuries, including literature and literary non-fiction as well as other writing such as reviews and journalism
- read and evaluate texts critically and make comparisons between texts
- summarise and synthesise information or ideas from texts
- use grammar correctly and punctuate and spell accurately
- acquire and apply a wide vocabulary

ASSESSMENT REQUIREMENTS

You will sit two examinations:

Paper 1 – Explorations in Creative Reading and Writing – Worth 50% of the GCSE

Section A – Reading one literature fiction text and answering 4 questions

Section B – Descriptive or narrative writing

Paper 2 – Writers' Viewpoints and Perspectives – Worth 50% of the GCSE

Section A – Reading one non-fiction text and one literary non-fiction and answering 4 questions

Section B – Writing to present a viewpoint

You will also be assessed on your speaking and listening skills but this does not contribute formally to your final grade.

BENEFITS OF STUDYING THIS COURSE

The ability to read with understanding, write clearly and speak fluently are essential skills for life. Many sixth forms, colleges and apprenticeships also require students to have developed the skills that this course covers.

ADDITIONAL INFORMATION

We use the AQA syllabus.

Useful websites:

www.aqa.org.uk

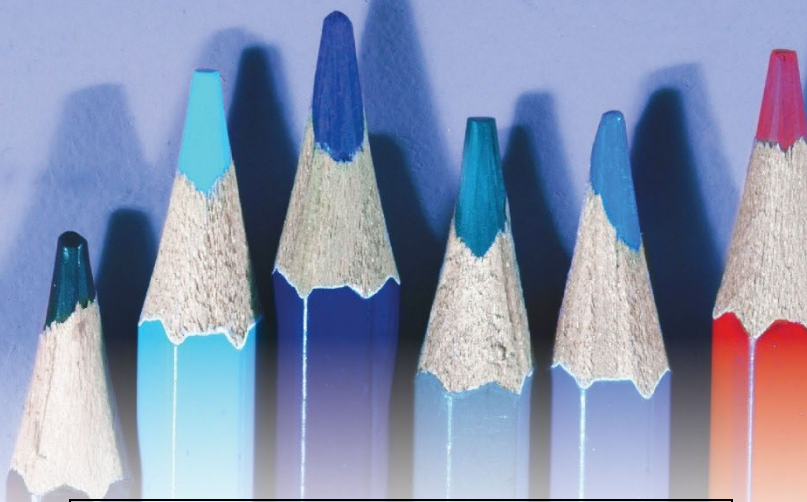
www.bcbitesize.com

www.revisionworld.com

Mr Bruff is a teacher with a YouTube channel and has a wealth of video resources to support all aspects of this course. English with Matt is another YouTube account that many students find useful.

Mathematics

GCSE



COURSE INFORMATION

Students will follow a bespoke KS4 9-1 GCSE course. This course aims to enable students to:

- develop fluent knowledge, skills and understanding of mathematical methods and concepts
- acquire, select and apply mathematical techniques to solve problems
- reason mathematically, make deductions and inferences, and draw conclusions
- comprehend, interpret and communicate mathematical information in a variety of forms appropriate to the information and context.

ASSESSMENT REQUIREMENTS

The assessments will cover the following content headings: Number, algebra, ratio, proportion and rates of change, geometry and measures, probability and statistics.

Assessment criteria for each content headings are:

AO1 Use and apply standard techniques

AO2 Reason, interpret and communicate mathematically

AO3 Solve problems within mathematics and in other contexts

The qualification consists of three equally-weighted written examination papers at either Foundation tier (grades 1-5) or Higher tier (grades 4-9).

All three papers must be at the same tier of entry and must be completed in the same assessment series.

There are two calculator papers and one non- calculator paper. Each paper is 1 hour and 30 minutes.

BENEFITS OF STUDYING THIS COURSE

Mathematics GCSE is a gateway qualification.

It is a requirement for most further education courses, job and apprenticeships.

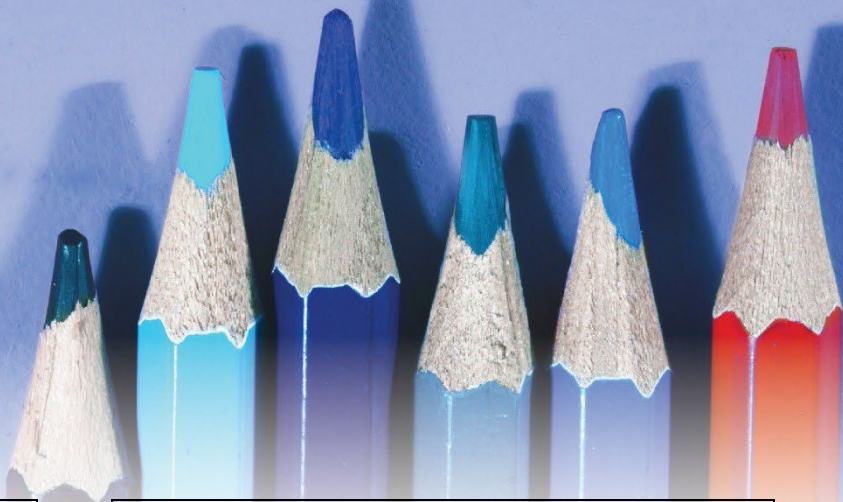
It is a core subject and all students are expected to study it to GCSE level.

ADDITIONAL INFORMATION

In recent years, higher education institutions and employers have consistently flagged the need for students to develop a range of transferable skills to enable them to respond with confidence to the demands of further study and the world of work.

The mathematics 9-1 GCSE ensures students are equipped with these skills as they develop reasoning and problem-solving skills.

Combined Science GCSE (Trilogy)



COURSE INFORMATION

All students across the country have to study a minimum of 2 GCSEs in science.

The specification is divided into topics, each covering different key concepts of biology, chemistry and physics.

All three sciences are studied, there isn't an option to drop one.

Topics studied include:

- Cell biology
- Infection and response
- Bioenergetics
- Organic chemistry
- Chemistry of the atmosphere
- Chemical changes
- Magnetism and electromagnetism
- Forces
- Waves

ASSESSMENT REQUIREMENTS

The qualification is worth two GCSEs.

There are two tiers of entry: Foundation (assesses grades 5-5 to 1-1) and Higher (assesses grades 9-9 to 4-4).

The qualification is assessed by examinations at the end of year 11. There is no coursework component. The examinations will assess the topics taught over the GCSE course as well as the scientific skills, mathematical skills and the required practical content.

There are six 1 hour and 15 minute examinations at the end of the course – two biology, two chemistry and two physics. Each examination contributes 16.7% to the overall qualification.

Two GCSE grades are awarded which can be identical or adjacent i.e. 5-6, 6-6 or a 6-7.

BENEFITS OF STUDYING THIS COURSE

This course will allow you to further your studies at post-16, either through studying a science A-level or following a vocational course.

During your studies, you will develop understanding of the nature, processes and methods of science that will help you to answer scientific questions about the world.

ADDITIONAL INFORMATION

The course studied is AQA GCSE 9-1 in Combined Science (Trilogy)

For more detailed information, the full specification can be found at:

[AQA | Science | GCSE | GCSE Science](#)

Religious Education

GCSE

COURSE INFORMATION

All students are required to study Roman Catholic Christianity as the main religion with Judaism as the second religion.

Area of Study 1 – Roman Catholic Christianity

Content overview:

- Beliefs and Teachings
- Practices
- Sources of Wisdom and Authority
- Forms of Expression and Ways of Life

Area of Study 2 – Judaism

Content overview:

- Beliefs and Teachings
- Practices

Area of Study 3 – Philosophy and Ethics Roman Catholic

Content overview:

- Arguments for the Existence of God
- Religious Teachings on Relationships and Families in the 21st century

ASSESSMENT REQUIREMENTS

Students follow the Edexcel specification A – Belief and Practice in the 21st Century GCSE.

The Pearson Edexcel GCSE (9–1) in Religious Studies A consists of three externally-examined papers:

Paper 1: Area of Study 1 – Roman Catholic Christianity

*Written examination: 1 hour and 45 minutes
50% of the qualification 102 marks*

Paper 2: Area of Study 2 – Judaism

*Written examination: 50 minutes
25% of the qualification 51 marks*

Paper 3: Area of Study 3 – Philosophy and Ethics Roman Catholic

*Written examination: 50 minutes
25% of the qualification 51 marks*

BENEFITS OF STUDYING THIS COURSE

At De La Salle, Religious Education is about the development of an open-ended, 'thinking' approach to the Catholic tradition, rooted in the core values of our Lasallian heritage. Religious Education aims to develop students' abilities in describing, explaining, analysing and evaluating whilst exploring the key principles of inclusion, faith and challenge. Religious Education also helps to enable students to develop respect for others and offers opportunities for personal reflection and spiritual development.

ADDITIONAL INFORMATION

Wider reading

- Sophie's World by Jostein Gaarder
- The Imam's Daughter by Hannah Shah
- The Curious Incident of the Dog in the Night by Mark Haddon
- The Help by Kathryn Stockett
- The Book Thief by Markus Zusak
- The Christmas Mystery by Jostein Gaarder
- My Sister's Keeper by Jodi Picoult
- The Unforgotten Coat by Frank Cottrell Boyce
- When Hitler Stole Pink Rabbit by Judith Kerr

Choice 1

Students choose one subject from:

French

Spanish

Art

Computing

Hospitality and Catering

ICT

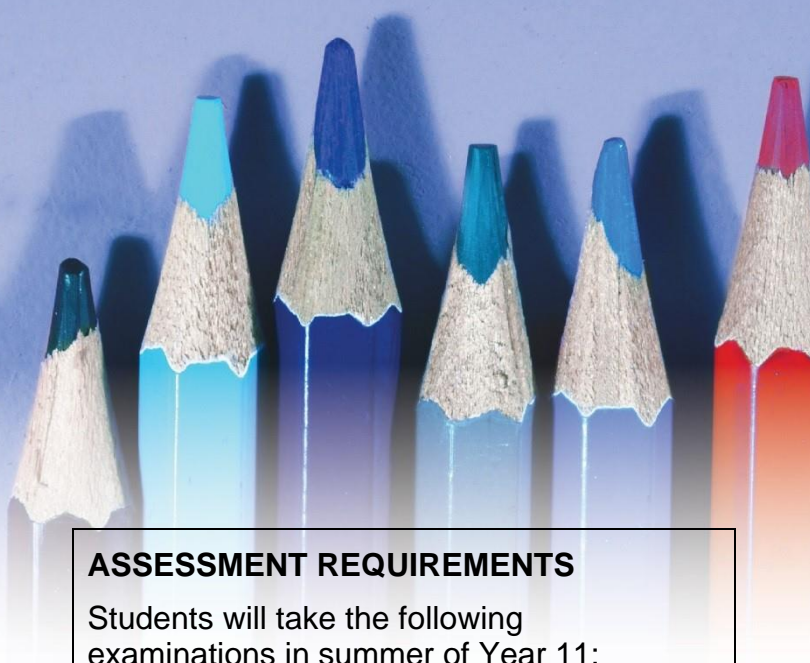
PE Vocational

Psychology

French

GCSE

Edexcel



COURSE INFORMATION

The course aims to enable students to develop their French language skills to their full potential, equipping them with the knowledge to communicate in a variety of contexts with confidence. Students study all of the following themes on which the examinations are based.

Assessment is set in the context of these three themes.

Theme 1: People and lifestyle

Theme 2: Popular culture

Theme 3: Communication and the world around us

ASSESSMENT REQUIREMENTS

Students will take the following examinations in summer of Year 11:

Paper 1: Listening

Paper 2: Speaking

Paper 3: Reading

Paper 4: Writing

Students are entered for either Higher (grades 4–9) or Foundation Tier (grades 1–5). Students must take all four question papers at the same tier.

BENEFITS OF STUDYING THIS COURSE

Key Skills Gained:

1. Develop understanding of the spoken and written language
2. Improve communication skills in many settings
3. Expand knowledge of countries and communities that use the language

ADDITIONAL INFORMATION

Progression to Sixth Form:

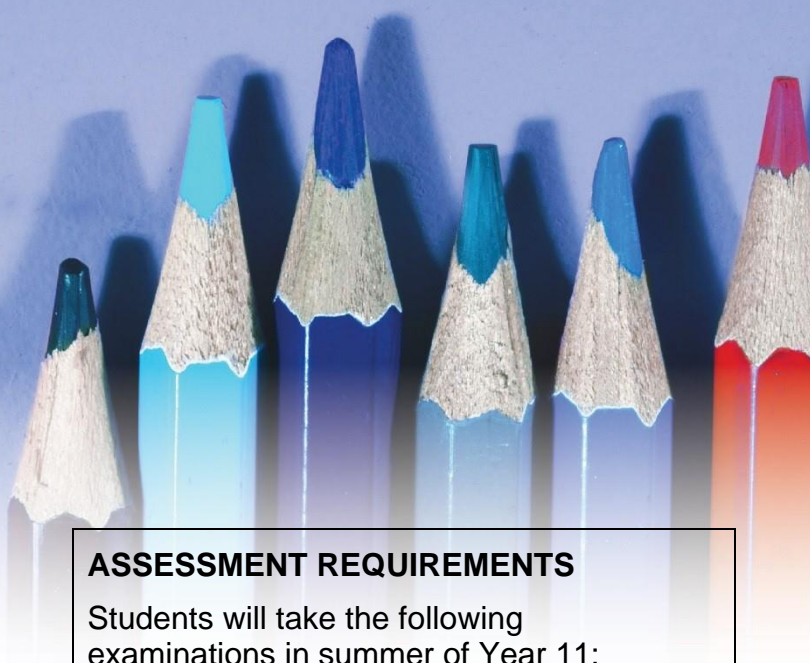
AS and A2 courses are available in this subject for students who achieve a good grade at GCSE.

Further Progression

People with language skills are well thought of in the modern world. They stand out as talented and successful people with broad and exciting horizons! Studying languages can help you to make the most of holidays, and enable you to gain employment with foreign links.

Spanish

GCSE Edexcel



COURSE INFORMATION

The course aims to enable students to develop their Spanish language skills to their full potential, equipping them with the knowledge to communicate in a variety of contexts with confidence. Students study all of the following themes on which the examinations are based.

Assessment is set in the context of these three themes.

Theme 1: People and lifestyle

Theme 2: Popular culture

Theme 3: Communication and the world around us

ASSESSMENT REQUIREMENTS

Students will take the following examinations in summer of Year 11:

Paper 1: Listening

Paper 2: Speaking

Paper 3: Reading

Paper 4: Writing

Students are entered for either Higher (grades 4–9) or Foundation Tier (grades 1–5). Students must take all four question papers at the same tier.

BENEFITS OF STUDYING THIS COURSE

Key Skills Gained:

1. Develop understanding of the spoken and written language
2. Improve communication skills in many settings
3. Expand knowledge of countries and communities that use the language

ADDITIONAL INFORMATION

Progression to Sixth Form:

AS and A2 courses are available in this subject for students who achieve a good grade at GCSE.

Further Progression

People with language skills are well thought of in the modern world. They stand out as talented and successful people with broad and exciting horizons! Studying languages can help you to make the most of holidays, and enable you to gain employment with foreign links.

Art & Design

GCSE



COURSE INFORMATION

Year 10: Students will deepen their knowledge and understanding of techniques and processes in Fine Art, Mixed media, Textiles, Photography and 3-Dimensional Studies. This year helps students to consolidate learning, uncover their strengths and areas of interest and express their opinions and identity through art.

Year 11: Students will start to work more independently following their own creative journey in response to given themes and briefs. Developing ideas in a variety of ways are key features of this examination. The externally set assignment takes place in the second term of Year 11.

ASSESSMENT REQUIREMENTS

Component 1: Portfolio = 60% of the total mark

The portfolio consists of a mini and main project, which demonstrates student engagement and skill level through the four assessment objectives. The mini project is a selection of best work from Year 10 and the main project is a sustained area of investigation leading to a personal response. This project will be individually designed and led by the student.

Component 2: Externally set assignment = 40% of the total mark

Students respond to their chosen starting point from an externally set assignment paper relating to their subject title, evidencing coverage of all four assessment objectives. This unit is typically covered between January and April in Year 11.

BENEFITS OF STUDYING THIS COURSE

Visual learning is a very different experience providing students with a unique way of seeing the world around them. It provides students with opportunities to explore their own creativity, how to look and analyse what they see and how to present a personal and unique response to their surroundings. It equips learners with the necessary skills to contribute to the fastest growing economy in the UK – the creative industries.

ADDITIONAL INFORMATION

Possibilities in Art & Design:

There is also the option in Year 10 to undertake an additional GCSE in Photography. This is an after-school class which takes place on a Monday. **Leave with 2 GCSEs in Art.*

Art and Design is so broad that within this specification you could explore any type of art from painting/ printing/ 3D/ animation/ photography/ textiles and so on. Don't be put off if you think you can't draw, success can be found in many ways in art.

Computer Science

GCSE

COURSE INFORMATION

OCR GCSE (9–1) Computer Science builds on the pioneering qualification development in this field. Relevant to the modern, changing world of computing, it's designed to boost computing skills essential for the 21st century. We've talked to companies like Microsoft, Google and Cisco, organisations like BCS (The Chartered Institute in IT) and Computing at School (CAS), plus teachers and academics to develop this contemporary qualification.

The specification focuses on:

- Computational thinking as its core, helping students to develop the skills to solve problems, design systems and understand human and machine intelligence
- Applying the academic principles they learn in the classroom to real-world systems in an exciting and engaging way
- Giving students a clear progression into higher education, as the course was designed after consultation with members of BCS, CAS and top universities.

BENEFITS OF STUDYING THIS COURSE

Progress to:

A/AS Level Computer Science; Cambridge Technicals in Digital Media; Cambridge Technicals in IT or Level 2/L3 Apprenticeship.

ASSESSMENT REQUIREMENTS

GCSE (9-1) Computer Science is assessed through **two written examinations**. Each exam is worth **50%**.

Students will also undertake a programming project in their final year which supports the development of understanding across the whole specification.

Learning is delivered through a creative blend of practical and theoretical lessons. Students are given the opportunity to develop practical programming skills, and also develop vital understanding across a range of relevant computer science topics.

The written examinations are undertaken in the final year of the course. GCSE (9-1) Computer Science offers resit opportunities.

ADDITIONAL INFORMATION

Ideal for:

- Level 2 students
- Students who are new to computing topics
- Students who want to experience computer science at an 'intermediate' level
- Students who are thinking of a computing career.

Hospitality and Catering

WJEC Level 1/2 Vocational Award



COURSE INFORMATION

The Level 1/2 Vocational Award in Hospitality and Catering has been designed to support learners in schools and colleges who want to learn about this vocational sector and the potential it can offer them for their careers or further study.

It is most suitable as a foundation for further study. This further study would provide learners with the opportunity to develop a range of specialist and general skills that would support their progression to employment.

Employment in hospitality and catering can range from waiting staff, receptionists and catering assistants to chefs, hotel and bar managers and food technologists in food manufacturing. All of these roles require further education and training either through apprenticeships or further and higher education.

BENEFITS OF STUDYING THIS COURSE

This course is perfect for students who:

- want to learn more about this industry
- like working with other people
- are good at planning and organisation
- enjoy planning and preparing food for other people
- are creative

ASSESSMENT REQUIREMENTS

Unit 1: The Hospitality and Catering Industry

The applied purpose of the unit is for learners to use their knowledge and understanding of the hospitality and catering industry in order to propose new hospitality and catering provision to meet specific needs.

Externally assessed.

Unit 2: Hospitality and Catering in Action

The applied purpose of the unit is for learners to safely plan, prepare, cook and present nutritional dishes

Internally assessed.

ADDITIONAL INFORMATION

Hospitality and catering applies to almost every sector of society. This ranges from local bars and restaurants to the food and beverage service on airlines. This also teaches our students about health and safety requirements within both the private and commercial sector.

ICT

OCR Cambridge National

COURSE INFORMATION

Cambridge National in IT will inspire and equip students with the confidence to use skills that are relevant to the IT sector and more widely. It covers the use of IT in the digital world, Internet of Everything, data manipulation, human-computer interface (HCI) and augmented reality.

This qualification will develop applied knowledge and practical skills in the creative use of information technologies. It is broken down into four main delivery themes:

- Project initiation, planning and review
- Collecting, manipulating/processing and storing data
- Creatively developing meaningful information for customer distribution
- Awareness of the importance of legal, moral, ethical and security factors

BENEFITS OF STUDYING THIS COURSE

PROGRESS TO: Level 3 vocational qualifications, such as the Cambridge Technical or A Level.

The skills, knowledge and understanding they will develop through this qualification are very relevant to both work and further study. They will support them in a range of subject areas such as A Levels in Business or Geography, or Cambridge Technicals in IT. They can also support their progression into employment through Apprenticeships in areas such as Digital Marketer or Business Administrator.

ASSESSMENT REQUIREMENTS

This qualification is 120 Guided Learning Hours, and is equivalent to a GCSE in both size and rigour.

There are two centre-assessed units offering practical-based assessment opportunities, which contain underpinning knowledge and understanding.

Assessment **Unit R050** is assessed by an exam and marked by OCR (1 hour 30 mins)

Assessment **Unit R060** is a coursework unit covering data manipulation using spreadsheets. This will be centre marked and a sample sent to moderation.

Assessment **Unit R070** is a coursework unit covering augmented reality. This will be centre marked and a sample sent to moderation.

ADDITIONAL INFORMATION

All results are awarded on the following scale:
Level 2 – Distinction* (*2), Distinction (D2), Merit (M2), Pass (P2)

Level 1 – Distinction (D1), Merit (M1), Pass (P1) and Unclassified.

Students have the opportunity both to resit the external and internal assessment.

For more information please visit:
<http://ocr.org.uk/Images/371960-specification.pdf>

Physical Education Vocational Sports Coaching

COURSE INFORMATION

The Physical Education Vocational course will be WJEC Technical Award in Sports Coaching.

Students opting for Sports Coaching should:

- Have a genuine interest in all sports
- Have an extremely high track-record of bringing PE kit to lessons
- Be willing to attend extra-curricular
- Be willing to lead on school and primary school leadership events
- Be prepared to complete written coursework; a written exam and also a practical coaching session

Students should **not** opt for Sports Coaching if:

- They have a poor record of bringing or wearing PE kit
- They have a poor record of full participation in all PE lessons
- They are not interested in sport

BENEFITS OF STUDYING THIS COURSE

This is widely regarded as an interesting course and great for developing students' leadership and confidence.

The course covers a wide range of aspects in relation to sports coaching and is ideal for students looking to progress into a career in the sports and physical activity industry.

ASSESSMENT REQUIREMENTS

Vocational course assessment usually involves:

Unit 1: Exam (40%) 80 marks

1 hour 20 mins

- Short & long-term effects of exercise;
- Components of fitness;
- Achieving improvements in training

Unit 2: Improving Sports Performance (25%)

Coursework based

- Physiological
- Psychological
- Technical

Unit 3: Coaching Principles (35%)

Practical (filmed) and coursework based

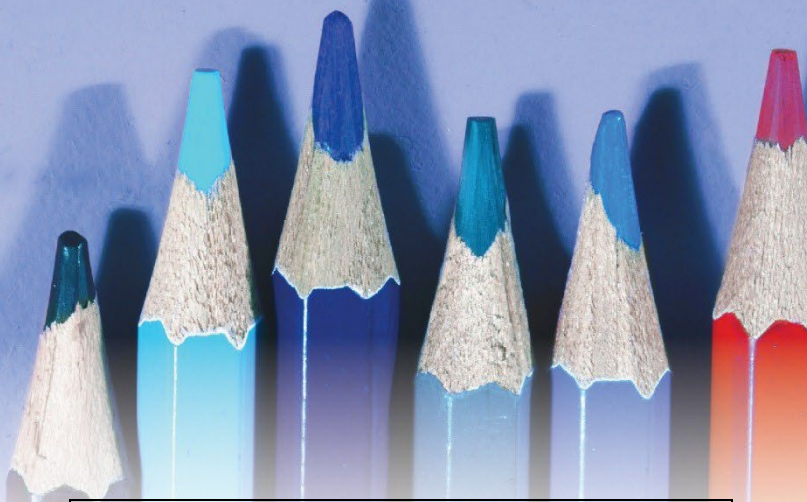
- Plan a session
- Lead a session (filmed evidence)
- Evaluate a session

ADDITIONAL INFORMATION

Students opting for this course are advised that there is a mandatory requirement to participate in **ALL** practical sessions, in **ALL** weathers. Students who have a poor participation record in PE are therefore not suitable for a course such as this.

Psychology

GCSE



COURSE INFORMATION

GCSE Psychology provides an initial insight into the studying the brain and behaviour. Students will have the opportunity to study topics such as criminal psychology, psychological problems and social influence whilst also gaining an understanding of the field of research.

For each unit students will be required to develop their understanding of the five core areas of psychology; biological, cognitive, social, developmental, and individual differences. Students will study two core studies for each topic and be able to critique the study based on its method and results.

Alongside the psychology knowledge, students will need a good prior mathematical knowledge to be successful in the course. Mathematical skills which are needed as part of the course include; ratio, standard form, significant figures, averages.

BENEFITS OF STUDYING THIS COURSE

If you are considering further and then higher education in fields like psychology, medicine, criminology, social work, education then this provides a good initial understanding. psychology complements a range of subjects taken as GCSE and A Level.

It works well alongside biology, maths, English as well as supporting studies in sociology, criminology and even business. There are also a range of individual benefits such as improved understanding of human behaviour and aiding in developing critical thinking skills.

ASSESSMENT REQUIREMENTS

Exam board; OCR

Paper 1

Criminal psychology	<i>90 marks</i>
Development	<i>Written paper</i>
Psychological problems	<i>90 minutes</i>
Research methods	<i>50% of total GCSE</i>

Paper 2

Social influence	<i>90 marks</i>
Memory	<i>Written paper</i>
Sleep and dreaming	<i>90 minutes</i>
Research methods	<i>50% of total GCSE</i>

It is recommended that you are capable of achieving a grade 5 maths GCSE to be able to meet the mathematical requirements of the course.

ADDITIONAL INFORMATION

Students will be need to be competent and confident in answering one extended essay question per unit, as well short answer questions.

The course is supported by OCR's work with Time to Change, England's biggest programme to challenge mental health stigma and discrimination.

Even if psychology is not pursued as a career, the skills and knowledge it provides in everyday life and almost any job that involves working with people are invaluable.

Choice 2

Students choose one subject from:

Geography

History

A very small number of students will be invited to follow the ASDAN life skills or Travel and Tourism courses in this option block

Geography

GCSE

COURSE INFORMATION

Students will understand how geography impacts everyday life and discover the key opportunities and challenges facing the world. Students will also develop academic and life skills from writing, fieldwork and communication to analytical skills.

In year 10 students will be studying the Physical Geography units about processes and landforms which will then enable them to connect to the Human Geography units in year 11.

Concepts studied in year 10 include:

- the Living World: Amazonia
- The Western Desert and the Sahel
- Geographical Hazards: Earthquakes, Tropical Storms and Climate Change
- UK Physical Landforms: Rivers and glaciated areas.

Concepts studied in year 11 include

- Challenges of Human Environments: the changing geography of Liverpool and Nigeria
- Economic Geography and the challenges of resource management: energy

BENEFITS OF STUDYING THIS COURSE

Studying geography gives students the opportunity to travel the world via the classroom, learning about both natural and social sciences along the way. They will:

- Develop skills of selecting, collating and analysing information
- Develop understanding of the world in which we live, and the interrelationships between the natural environment and human actions
- Enhance their natural curiosity for the world around them

ASSESSMENT REQUIREMENTS

Students will be assessed by taking three examination papers:

Paper 1: Living with the physical environment

Exam time: 1 hour 30 minutes
Total worth: 35% of GCSE grade

Paper 2: Challenges in the human environment

Exam time: 1 hour 30 minutes
Total worth: 35% of GCSE grade

Paper 3: Geographical applications

Exam time: 1 hour 30 minutes
Total worth: 30% of GCSE grade

Exam board: AQA

Fieldwork is integral to geography. All students will go to the Lake District to study rivers and Liverpool to study the impacts of regeneration. Students will also have the opportunity to take part in an overseas visit to Iceland. This trip will be launched in year 9 to accommodate the payment window.

ADDITIONAL INFORMATION

Geography opens up a range of choices for your future work and career, whether your future career lies in the environmental sector, business, education, the natural or social sciences, the media, in geospatial industries or in travel. None of the changes and challenges facing the UK and the world in the 21st century, including climate change, can be properly understood without geography.

History

GCSE



COURSE INFORMATION

Through a variety of media including ICT, film, photographs, cartoons, novels and other forms of information students will begin to explore their history studies.

In year 10 students will learn about American history between 1920 and 1973 including the roaring 20s, America during WW2, the Cold War and the Civil Rights Movement.

A separate investigation will be undertaken into America's involvement in the Korean and Vietnam wars.

Going into year 11, study will comprise of in-depth investigations into medicine (AD 1000 to the present) and finally a study of Elizabethan England which also involves a case study of an important Elizabethan building (e.g. a particular castle or theatre).

ASSESSMENT REQUIREMENTS

Students will be assessed by taking two examination papers:

Paper 1 = America 1920-1973. Conflict and tension in Asia 1950-75.

Exam time: 2 hours

Total worth: 50% of GCSE grade

Paper 2 = Britain: Health and the People (1000-present day)

Elizabethan England 1568-1603

Exam time: 2 hours

Total worth: 50% of GCSE grade

Exam board: AQA

BENEFITS OF STUDYING THIS COURSE

- Develop skills of selecting, collating and analysing information
- Improve understanding of the key developments in the 20th Century
- Equip students with the thinking skills to ensure the world doesn't make the same mistakes twice; through developing an understanding of different cultures

ADDITIONAL INFORMATION

History can form the basis of a career in many fields such as journalism, politics, teaching, law, business management and many more. It will give you the opportunity to understand the world on a deeper level, debate, analyse and think critically. In addition, it forms part of the EBacc qualification which is being recognised as an increasingly important criteria when applying for entry into some universities.

Choice 3

Students choose one subject from:

Art

Design Technology

Drama

Geography

Graphics

Health & Social Care

Music Vocational

PE*

Spanish

Travel & Tourism

Science (triple) by invitation**

*When opting for PE, students will be allocated to the course (GCSE or vocational) that the school feels suits their academic profile for achievement in year 11. As such, by opting for PE, students understand that the course will be decided by the PE department and should be happy to study either course.

**If you cannot see Science (triple) on Options Online but your child would like to study it, please contact the school so that the science department can consider your child's suitability for the course.

Art & Design

GCSE



COURSE INFORMATION

Year 10: Students will deepen their knowledge and understanding of techniques and processes in Fine Art, Mixed media, Textiles, Photography and 3-Dimensional Studies. A field trip early on in the course supports the first term's project based on 'Structures'.

The breadth of the course helps students to consolidate learning, uncover their strengths and areas of interest, and express their opinions and identity through art.

Year 11: Students will start to work more independently following their own creative journey in response to given themes and briefs. Developing ideas in a variety of ways are key features of this examination and there is a rich diversity of outcomes seen on this course. The externally set assignment takes place in the second term of Year 11.

Art and Design is so broad that within this specification you could explore any type of art throughout the course. Don't be put off if you think you can't draw, success can be found in many ways in art.

BENEFITS OF STUDYING THIS COURSE

Visual learning is a very different experience providing students with a unique way of seeing the world around them. It provides students with opportunities to explore their own creativity, how to look and analyse what they see and how to present personal and unique responses to their surroundings.

It equips learners with the necessary skills to contribute to the fastest growing economy in the UK – the Creative Industries.

ASSESSMENT REQUIREMENTS

Component 1: Portfolio = 60% of the total mark

The portfolio consists of a mini and main project, which demonstrates student engagement and skill level through the four assessment objectives. The mini project is a selection of best work from Year 10 and the main project is a project with lots of experimentation and investigation which leads to a personal response. This project will follow a given theme but remain open to the students talents and interests.

Component 2: Externally set assignment = 40% of the total mark

Students respond to a selected starting point from an externally set assignment paper. This leads to a creative project which has 10 hours of supervised time to create the final outcome. This Component is typically covered between January and April in Year 11.

ADDITIONAL INFORMATION

Possibilities in Art & Design:

For Higher ability students who take art as a GCSE, there is also the option to undertake an additional GCSE in Photography during Year 10. This is an after-school class which takes place on a Monday and requires a firm commitment.
**Leave with 2 GCSEs in Art.*

Many of our students go on to study art further at College and now are extremely successful within the Creative Industries.

Design Technology

GCSE

COURSE INFORMATION

Qualification Purpose

GCSE Design and Technology will prepare students to participate confidently and successfully in an increasingly technological world. Students will gain awareness and learn from wider influences on Design and Technology including historical, social, cultural, environmental and economic factors. Students will get the opportunity to work creatively when designing and making and apply technical and practical expertise.

Our GCSE allows students to study core technical and designing and making principles, including a broad range of design processes, materials techniques and equipment

BENEFITS OF STUDYING THIS COURSE

- Learn hands-on skills in designing, making, and evaluating products using various materials such as wood, metal, plastics, and textiles.
- Gain experience with modern tools like 3D printers, CAD (Computer-Aided Design) software, and CAM (Computer-Aided Manufacturing).
- Develop solutions to real-world challenges by creating functional and sustainable designs.
- Projects help students build critical thinking and analytical skills applicable in engineering, architecture, and product design.
- Prepares students for further education in design, architecture, product design, and engineering.
- A solid starting point for apprenticeships or advanced qualifications like A-Levels or BTECs in design-related fields.
- Develops teamwork, communication, project management, and presentation skills.

ASSESSMENT REQUIREMENTS

How it's assessed:

- Written exam: 2 hours
- 100 marks
- 50% of GCSE
- Non-exam assessment (NEA): 30–35 hours approx
- 100 marks
- 50% of GCSE Task(s)

The GCSE Design and Technology specification sets out the knowledge, understanding and skills required to undertake the iterative design process of exploring, creating and evaluating.

ADDITIONAL INFORMATION

NEA TASK:

- Identifying and investigating design possibilities
- Producing a design brief and specification
- Generating design ideas
- Developing design ideas
- Realising design ideas
- Analysing & evaluating
- In the spirit of the iterative design process, the above should be awarded holistically where they take place and not in a linear manner
- Contextual challenges to be released annually by AQA on 1 June in the year prior to the submission of the NEA
- Students will produce a prototype and a portfolio of evidence
- Work will be marked by teachers and moderated by AQA

Drama

GCSE

COURSE INFORMATION

Students will create their own devised performance based on a chosen stimulus from the exam board stimulus paper. In addition to the performance, students will be marked on an accompanying portfolio with evidence of the process and decisions made whilst creating and developing their performance.

Students will take part in a showcase, demonstrating their chosen skills in a live performance. Students will perform in two performances from one text. Students will be required to produce an accompanying document which outlines their intentions for and approach to the performance showcase.

For Section A, students study one performance text in detail from a set list given by the exam board. This section of the paper will contain questions which require short and medium length answers. It assesses students' knowledge and understanding of how drama is developed and performed.

In Section B, students will be required to analyse and evaluate a live theatre performance they have seen using accurate subject-specific terminology.

BENEFITS OF STUDYING THIS COURSE

Working in drama develops everyone to gain a deeper understanding of themselves and the world around them. Drama allows young people to communicate with and understand others in new ways. Drama is an important tool for preparing everyone to live and work in a world that is increasingly team-orientated rather than hierarchical. Drama helps students develop tolerance and empathy.

ASSESSMENT REQUIREMENTS

Devising Drama

30% of Overall GCSE

Presenting and Performing Texts

30% of Overall GCSE

Perform TWO scenes from a well-known play.

Drama: Performance and Response: Written Exam Paper

40% of overall GCSE

Section A: Study Blood Brothers. Answer questions on characters from the play, demonstrate your knowledge of the play. Section B: Analyse and evaluate a live theatre performance.

ADDITIONAL INFORMATION

This is a highly practical subject therefore for assessments drama blacks are required (black trousers, black t-shirt and black pumps).

Students should attend theatre performances, watch films and read as many plays as they can. Students should be prepared to rehearse after school in preparation for assessment.

Geography

GCSE

COURSE INFORMATION

Students will understand how geography impacts everyday life and discover the key opportunities and challenges facing the world. Students will also develop academic and life skills from writing, fieldwork and communication to analytical skills.

In year 10 students will be studying the Physical Geography units about processes and landforms which will then enable them to connect to the Human Geography units in year 11.

Concepts studied in year 10 include:

- the Living World: Amazonia
- The Western Desert and the Sahel
- Geographical Hazards: Earthquakes, Tropical Storms and Climate Change
- UK Physical Landforms: Rivers and glaciated areas.

Concepts studied in year 11 include

- Challenges of Human Environments: the changing geography of Liverpool and Nigeria
- Economic Geography and the challenges of resource management: energy

BENEFITS OF STUDYING THIS COURSE

Studying geography gives students the opportunity to travel the world via the classroom, learning about both natural and social sciences along the way. They will:

- Develop skills of selecting, collating and analysing information
- Develop understanding of the world in which we live, and the interrelationships between the natural environment and human actions
- Enhance their natural curiosity for the world around them

ASSESSMENT REQUIREMENTS

Students will be assessed by taking three examination papers:

Paper 1: Living with the physical environment

Exam time: 1 hour 30 minutes
Total worth: 35% of GCSE grade

Paper 2: Challenges in the human environment

Exam time: 1 hour 30 minutes
Total worth: 35% of GCSE grade

Paper 3: Geographical applications

Exam time: 1 hour 30 minutes
Total worth: 30% of GCSE grade

Exam board: AQA

Fieldwork is integral to geography. All students will go to the Lake District to study rivers and Liverpool to study the impacts of regeneration. Students will also have the opportunity to take part in an overseas visit to Iceland. This trip will be launched in year 9 to accommodate the payment window.

ADDITIONAL INFORMATION

Geography opens up a range of choices for your future work and career, whether your future career lies in the environmental sector, business, education, the natural or social sciences, the media, in geospatial industries or in travel. None of the changes and challenges facing the UK and the world in the 21st century, including climate change, can be properly understood without geography.

Graphic Design

GCSE

COURSE INFORMATION

Qualification Purpose

GCSE Graphic Communication (AQA Art & Design) aims to provide students with the skills, knowledge, and understanding needed to create visual designs that communicate ideas, information, and emotions in response to specific briefs. It encourages students to work with various graphic communication methods, such as design for print, branding, typography, and interactive design. This qualification emphasizes the development of personal, imaginative ideas while equipping students with practical skills for a range of creative industries, ensuring they are well-prepared for both further education and future employment in design-related fields.

ASSESSMENT REQUIREMENTS

Component 1: Portfolio = 60% of the total mark

The portfolio consists of a mini and main project, which demonstrates student engagement and skill level through the four assessment objectives. The mini project is a selection of best work from Year 10 and the main project is a sustained area of investigation leading to a personal response. This project will be individually designed and led by the student.

Component 2: Externally set assignment = 40% of the total mark

Students respond to their chosen starting point from an externally set assignment paper relating to their subject title, evidencing coverage of all four assessment objectives. This unit is typically covered between January and April in Year 11.

BENEFITS OF STUDYING THIS COURSE

- Learn hands-on skills in designing, making, and evaluating products using various materials such as wood, metal, plastics, and textiles.
- Gain experience with modern software and manufacturing processes including both CAD (Computer-Aided Design) software such as Adobe Design Suite (Photoshop/Illustrator), and CAM (Computer-Aided Manufacturing) 3D Printers, Laser Cutter, Sublimation Printing.
- Prepares students for further education in a multitude of design careers, such as; Graphic

ADDITIONAL INFORMATION

NEA TASK:

- Identifying and investigating design possibilities
- Producing a design brief and specification
- Generating design ideas
- Developing design ideas
- Realising design ideas
- Analysing & evaluating
- Component 1 Deadline in December of Year 11

Health and Social Care

OCR Cambridge National Level 1/2



COURSE INFORMATION

The Cambridge National in Health and Social Care will encourage students to:

- Understand and apply the fundamental principles and concepts of the rights of individuals, person centred values, effective communication and how to protect individuals in health and social care settings
- Develop learning and practical skills that can be applied to real-life contexts and work situations
- Think creatively, innovatively, analytically, logically and critically
- Develop independence and confidence in using skills that would be relevant to the health and social care sector and more widely

ASSESSMENT REQUIREMENTS

R032: Principles of care in health and social care settings

1. The rights of service users in health and social care settings
2. Person-centred values
3. Effective communication in health and social care settings
4. Protecting service users and service providers in health and social care settings

This unit is assessed by an exam.

R033: Supporting individuals through life events

1. Life stages
2. Impacts of life events
3. Sources of support.

This unit is assessed by a Set Assignment.

R035: Health Promotion Campaigns

1. Current public health issues and the impact on society
2. Factors influencing health and wellbeing
3. Plan and create a health promotion campaign
4. Deliver and evaluate a health promotion campaign

This unit is assessed by a Set Assignment.

BENEFITS OF STUDYING THIS COURSE

Health and Social Care not only allows students explore how individuals develop and adapt, but also develop knowledge and understanding of the sector and the application of care values. This allows our students to relate the theory and put it into context for real life scenarios.

ADDITIONAL INFORMATION – Careers

- Doctor/Nurse/Pharmacist/Midwife
- Healthcare Assistant/Care Assistant
- Occupational therapists
- Counsellors
- Administrators
- Criminology
- Social Work

WJEC Level 1/2 Vocational Award in Performing Arts – Music (Technical Award)

COURSE INFORMATION

Unit 1: Performing Music (36 GLH at 30%):– Internally Assessed

Creatives reproduce work in a huge range of different disciplines, sometimes as revivals of remixes of original songs and cover versions. They work with an existing piece of music and undertake a research and rehearsal process in order to reproduce the work to a professional standard. For example, a musician may produce a cover version of an existing song for a concert or gig.

Unit 2: Creating Music - Composing (36 GLH at 30%): - Internally Assessed

In this unit learners will gain, develop and demonstrate knowledge and understanding of the skills and techniques needed to create, compose and refine original work in Music.

Unit 3: Performing Arts in Practice (48GLH at 40%): - Externally Assessed

This unit introduces learners to areas of the performing arts that need to be considered when responding to an industry commission. Learners will need to draw on their knowledge of the skills and techniques needed to reproduce an existing piece of professional/published work from Unit 1 alongside their knowledge and understanding of the skills and techniques needed to create and refine original work from Unit 2.

BENEFITS OF STUDYING THIS COURSE

Once you have completed the qualification, you will have developed valuable knowledge, practical skills and a wider understanding of the music industry. This qualification will allow you to develop your knowledge and skills through practical and creative application.

ASSESSMENT REQUIREMENTS

Unit 1: Performing Music

Learners will be assessed on:

Music:

technical control, rhythm and pitch, dynamics and balance, expression, technical skills on chosen instrument or voice.

OR

Music technology:

technical control, dynamics and balance, effective use of chosen technology in performance or presentation: recorded and/or live, expression, mixing and beat matching.

Unit 2: Creating Music

Candidates will be required to perform one piece or a selection of pieces. Candidates can work as part of a group but each candidate will be assessed on their individual contribution, which must be clearly recorded in their development log.

Unit 3: Performing Arts in Practice

Requires learners to draw on knowledge and experience gained through Units 1 and 2.

ADDITIONAL INFORMATION

This subject requires learners to enjoy and relish their chosen instruments, which requires them to attend their instrument / vocal lessons, this is provided free of charge by the school to support learners skills.

Physical Education

GCSE

COURSE INFORMATION

OCR GCSE PE. **70%** Theory. **30%** Practical.

Component 1:

Exam Paper 1: Physical Factors Affecting Performance (30%)

- Muscular and skeletal systems
- Movement analysis
- Cardiovascular system
- Respiratory system
- Effects of exercise
- Physical Training

Component 2:

Exam Paper 2: Socio-cultural Issues and Sports Psychology (30%)

- Socio-cultural influences
- Sports psychology
- Health
- Fitness
- Well-being & diet

Component 3:

Practical Sports Performance (30%)

- 1 x team sport (10%)
- 1 x individual sport (10%)
- 1 x team / individual sport (10%)

Component 4:

Analysis of Performance Coursework (10%)

- . Written coursework 14 hours.

ASSESSMENT REQUIREMENTS

60% - 2 Written exam papers (1 hour x 60 marks each).

10% - Written coursework (14 hours).

30% - Practical activities. 3 activities from the list below – all must be performed **competitively**.

Team activities:

Association football; badminton; basketball; cricket; dance; Gaelic football; handball; hockey; lacrosse; netball; rowing; rugby league or rugby union; squash; table tennis; tennis; volleyball.

Individual activities:

Amateur boxing; athletics field events; athletics track events; canoeing; track cycling; road cycling; diving; golf; gymnastics; equestrian; kayaking; rock climbing; sculling; skiing; snowboarding; swimming; trampolining.

You must offer a **high standard of ability in 3 activities** from the new activity list.

The majority of the physical education course will be spent on theory work.

The course is heavily orientated towards scientific content therefore an interest in science and biology would be advantageous.

BENEFITS OF STUDYING THIS COURSE

This course prepares students well for a career in a variety of sporting and scientific pathways and further study of sport.

ADDITIONAL INFORMATION

Students opting for this course are advised that there is a mandatory requirement to participate in **ALL** practical sessions, in **ALL** weathers. Students who have a poor participation record in PE are therefore not suitable for a course such as this.

Physical Education Vocational Sports Coaching

COURSE INFORMATION

The Physical Education Vocational course will be WJEC Technical Award in Sports Coaching.

Students opting for Sports Coaching should:

- Have a genuine interest in all sports
- Have an extremely high track-record of bringing PE kit to lessons
- Be willing to attend extra-curricular
- Be willing to lead on school and primary school leadership events
- Be prepared to complete written coursework; a written exam and also a practical coaching session

Students should **not** opt for Sports Coaching if:

- They have a poor record of bringing or wearing PE kit
- They have a poor record of full participation in all PE lessons
- They are not interested in sport

BENEFITS OF STUDYING THIS COURSE

This is widely regarded as an interesting course and great for developing students' leadership and confidence.

The course covers a wide range of aspects in relation to sports coaching and is ideal for students looking to progress into a career in the sports and physical activity industry.

ASSESSMENT REQUIREMENTS

Vocational course assessment usually involves:

Unit 1: Exam (40%) 80 marks

1 hour 20 mins

- Short & long-term effects of exercise;
- Components of fitness;
- Achieving improvements in training

Unit 2: Improving Sports Performance (25%)

Coursework based

- Physiological
- Psychological
- Technical

Unit 3: Coaching Principles (35%)

Practical (filmed) and coursework based

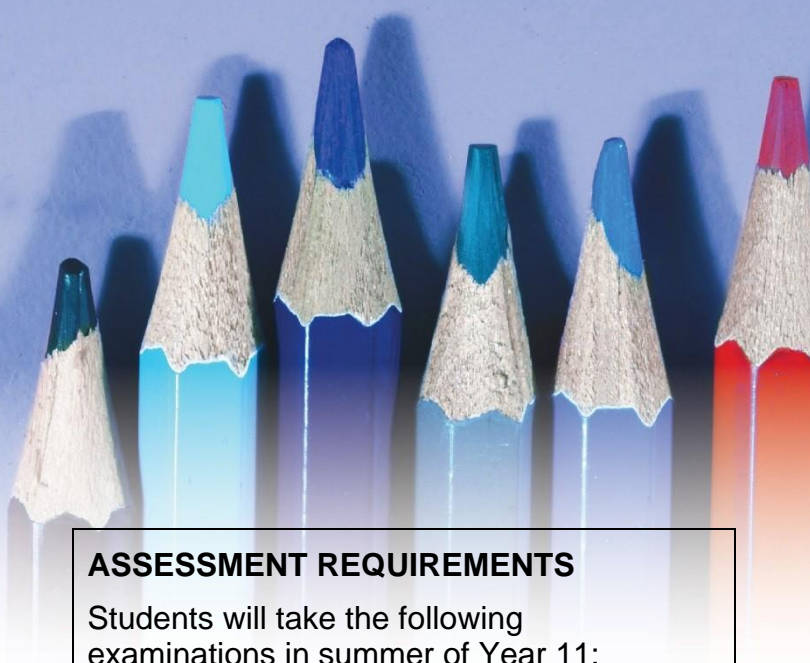
- Plan a session
- Lead a session (filmed evidence)
- Evaluate a session

ADDITIONAL INFORMATION

Students opting for this course are advised that there is a mandatory requirement to participate in **ALL** practical sessions, in **ALL** weathers. Students who have a poor participation record in PE are therefore not suitable for a course such as this.

Spanish

GCSE Edexcel



COURSE INFORMATION

The course aims to enable students to develop their Spanish language skills to their full potential, equipping them with the knowledge to communicate in a variety of contexts with confidence. Students study all of the following themes on which the examinations are based.

Assessment is set in the context of these three themes.

Theme 1: People and lifestyle

Theme 2: Popular culture

Theme 3: Communication and the world around us

ASSESSMENT REQUIREMENTS

Students will take the following examinations in summer of Year 11:

Paper 1: Listening

Paper 2: Speaking

Paper 3: Reading

Paper 4: Writing

Students are entered for either Higher (grades 4–9) or Foundation Tier (grades 1–5). Students must take all four question papers at the same tier.

BENEFITS OF STUDYING THIS COURSE

Key Skills Gained:

1. Develop understanding of the spoken and written language
2. Improve communication skills in many settings
3. Expand knowledge of countries and communities that use the language

ADDITIONAL INFORMATION

Progression to Sixth Form:

AS and A2 courses are available in this subject for students who achieve a good grade at GCSE.

Further Progression

People with language skills are well thought of in the modern world. They stand out as talented and successful people with broad and exciting horizons! Studying languages can help you to make the most of holidays, and enable you to gain employment with foreign links.

Travel and Tourism

BTEC Tech Award

COURSE INFORMATION

This qualification is for learners interested in taking a vocational course alongside their GCSEs that will offer an insight into what it is like to work the travel and tourism industry, allowing students to make an informed decision about their future learning and career.

The Travel and Tourism BTEC Tech Award is split into 3 components.

In component 1, learners will investigate travel and tourism organisations and destinations.

In component 2, learners will investigate how organisations use market research to identify travel and tourism trends and identify customer needs and preferences.

In component 3, learners will explore the different factors that may influence global travel and tourism, and how travel and tourism organisations and destinations respond to these factors.

In addition, learners will develop key skills such as research and written communication skills. This course builds on and uses the knowledge and skills from GCSEs, particularly GCSE geography, ICT and English. Upon successful completion, learners could progress to A-level.

BENEFITS OF STUDYING THIS COURSE

- Students are prepared for the world of work and have a good starting point for other qualifications.
- Employers value the qualities that vocational students bring to the workplace e.g., organisation, time management, communication and research skills
- Colleges and universities value the independent study skills that vocational students bring to their courses.

ASSESSMENT REQUIREMENTS

Students will be assessed as follows:

PSA 1: 3 tasks

6 hours controlled assessment

60 marks

Internally assessed and externally moderated

Total worth: 30% of final grade

PSA 2: 3 tasks

60 marks

Internally assessed and externally moderated

Total worth: 30% of final grade

External exam:

Exam time: 2 hours

60 marks

Total worth: 40% of final grade

Exam board: Pearson BTEC

Staffing

Mrs Rooney

Mrs Moss

Trip

Manchester Airport in year 10

EXPECTATIONS

You will be expected to do all of the following as part of your day-to-day work • Attend regularly • Participate effectively in lessons • Read and research • Keep a record of the information you find and the sources • Plan your work in a logical order and keep a record of your progress • Talk to your teachers about your ideas and how to achieve the best results • Produce drafts and final copies of your work • Produce good quality work with high • Meet deadlines.

Science (Triple)

GCSE

3 x GCSE, uses 1 option



COURSE INFORMATION

Students will study the three separate sciences (Biology, Chemistry and Physics) and will be awarded a GCSE grade in each one.

The GCSEs will be taught by three specialist teachers.

Some of the topics studied include:

- Infection and response (Biology)
- Bioenergetics (Biology)
- Organic chemistry (Chemistry)
- Chemistry of the atmosphere (Chemistry)
- Magnetism and electromagnetism (Physics)
- Space physics (Physics)

Studying triple science will use one option.

Triple science will be available to invited students. The science department will consider additional students by request.

ASSESSMENT REQUIREMENTS

There are two tiers of entry: Foundation (assesses grades 5 to 1) and Higher (assesses grades 9 to 4).

The qualification is assessed by examinations at the end of year 11. There is no coursework component.

There are two 1 hour and 45 minute examinations at the end of the course in each of the three sciences. Each examination contributes 50% to the overall qualification.

The examinations will assess the topics taught over the GCSE course as well as the scientific skills, mathematical skills and the required practical content.

Three separate GCSE grades are awarded.

BENEFITS OF STUDYING THIS COURSE

This course will allow you to further your studies at post-16, studying one or more of the science A-levels. The course builds on the topics taught in the Combined Science GCSE and the additional topics taught bridge the gap between GCSE and A-level. It is advisable to choose this option if you want to study science to a higher level and in a competitive field e.g. Medicine, Dentistry, Veterinary Science, as other students will have studied this course and it is an advantage to have done the same for these competitive science courses.

ADDITIONAL INFORMATION

The full specifications can be found at:

Biology - [AQA | Biology | GCSE | GCSE Biology](#)

Chemistry –

[AQA | Chemistry | GCSE | GCSE Chemistry](#)

Physics -

[AQA | Physics | GCSE | GCSE Physics](#)