



# DE LA SALLE

SCHOOL

ST HELENS

[www.delasalle.st-helens.sch.uk](http://www.delasalle.st-helens.sch.uk)

- Faith.
- Respect.
- Challenge.
- Innovation.
- Compassion.

## Year 10 Information Evening





# Welcome



# De La Salle School





# Attendance



De La Salle School



- Government expectation-97% attendance as a minimum
- Parental responsibility to attend school is a legal requirement
- Unauthorised absences will be dealt with by the Local Authority in the form of fixed penalty notices and court proceedings
- Strong pastoral teams in position to support attendance
- Data and information will be sent regularly
- 90% attendance is considered a persistent absentee



# Punctuality



De La Salle School



- School day begins at 8.30 am
- Students are expected to arrive to lessons on time
- Late to school twice in a week leads to a lunchtime detention
- Parents are notified about student punctuality to lessons
- Appropriate sanctions will be allocated



# Star Points



De La Salle School

- Daily 6 - positive start to the day
- Awarded by teachers for positive behaviour for learning and displaying positive Lasallian values
- Star points lead to a range of rewards
- Rewards include star of the week, vouchers, certificates of achievement, prize draws and postcards home





# Behaviour Points



De La Salle School

- Any students not following school expectations will have star points removed
- These are categorised as behaviour points
- Lost star points are monitored on a daily basis
- School sanctions then apply

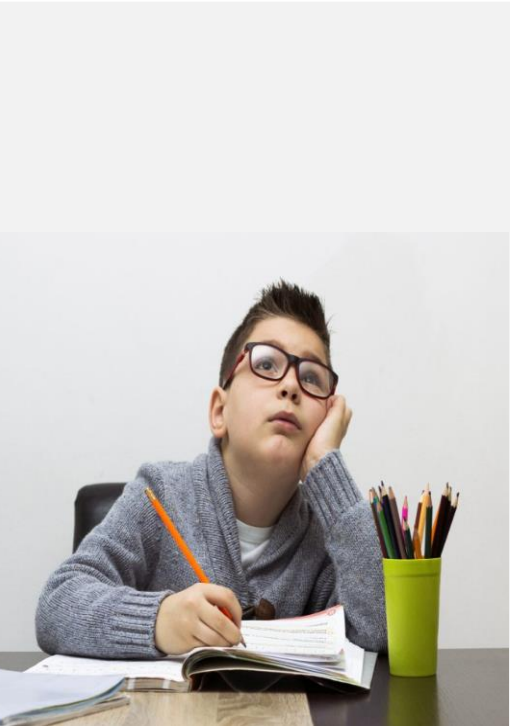




# Homework



De La Salle School



- In response to parental feedback the school will now set homework through Edulink
- Homework and independent study is set according to the demands of the school curriculum
- Examples include: research, revision, quizzes, reading, comprehension and creative tasks
- Parents will be informed of completion via the Edulink app
- Parents will be notified if students repeatedly don't complete homework via parentmail and/or phone call





- Login details have been emailed to you – it may have been a while ago, these haven't changed
- Student login details are the same as school network login details (school ID : De La Salle)
- Features include:
  - Star point information
  - Lunchtime purchases
  - Timetable
  - Attendance and punctuality information
  - School reports
  - Homework



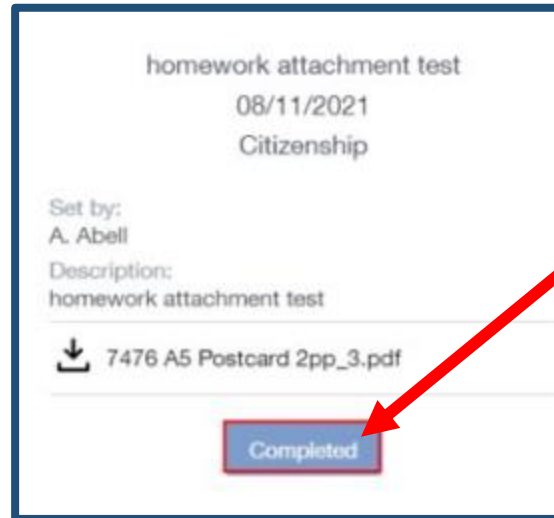




# Completing Homework



De La Salle School



Students must click 'complete' when the homework is done

Teachers will inform you through the app if they haven't received the homework

Due Date ↑	Name ↑	Subject & Class ↑	Available ↑	Received
In 5 Days 08/11/2021	homework attachment test	Citizenship	01/11/2021 00:00 2 days ago	✗
In 3101 days 01/05/2030	A future Assignment	edulink class 1	21/07/2021 11:36 105 days ago	





Striving to be the best you can

RESPECT



# Thank you



## De La Salle School

Thank you

- For the great standard of uniform
- For preparing the children so well
- The support you have shown to the year team





# Contact



De La Salle School

## Form Teachers

10J Mr. Tucker- [tuckerj@delasalleschool.org.uk](mailto:tuckerj@delasalleschool.org.uk)

10O Miss Manoucheri/Mrs Gray -

[manouchehris@delasalleschool.org.uk](mailto:manouchehris@delasalleschool.org.uk) / [grayd@delasalleschool.org.uk](mailto:grayd@delasalleschool.org.uk)

10H Mr.Singh [singhs@delasalleschool.org.uk](mailto:singhs@delasalleschool.org.uk)

10N Mr Ingham [inghamp@delasalleschool.org.uk](mailto:inghamp@delasalleschool.org.uk)

10B Miss Askew- [askewj@delasalleschool.org.uk](mailto:askewj@delasalleschool.org.uk)

10D Miss Condon/ Miss Aldred – [condonh@delasalleschool.org.uk](mailto:condonh@delasalleschool.org.uk) /

[aldredr@delasalleschool.org.uk](mailto:aldredr@delasalleschool.org.uk)

10L Mr Ashcroft – [ashcroftb@delasalleschool.org.uk](mailto:ashcroftb@delasalleschool.org.uk)

10S Mr Batley-Moss – [batley-mossg@delasalleschool.org.uk](mailto:batley-mossg@delasalleschool.org.uk)

Parentmail is our method of sending letters or written communication





# Contact



De La Salle School

- If you wish to speak to myself or Mrs. Marshall – PSM please use the following e-mails or phone the school number

[meliak@delasalleschool.org.uk](mailto:meliak@delasalleschool.org.uk)

[marshalk@delasalleschool.org.uk](mailto:marshalk@delasalleschool.org.uk)

- We will endeavour to get back to you between within 24 hours for the most serious concerns and 48 hours for all issues
- If you wish to meet with us, an appointment will need to be made in advance as we are not usually readily available





# The Year ahead



De La Salle School

## Trips:

- GCSE Art Trip – Albert Docks: October 31<sup>st</sup> and November 1<sup>st</sup>
- Geography, Iceland Field Trip: February 6<sup>th</sup> – 9<sup>th</sup>
- English – Theatre trip – An inspector Calls: March 16<sup>th</sup>

## Duke of Edinburgh:

All pupils should be checking MS Teams and their school email for updates

## Groups/ Activities: (via invitation)

- HAP Scholars – Aspirations and pathway to university
- Chemistry for all – LJMU Chemistry sessions

## Careers:

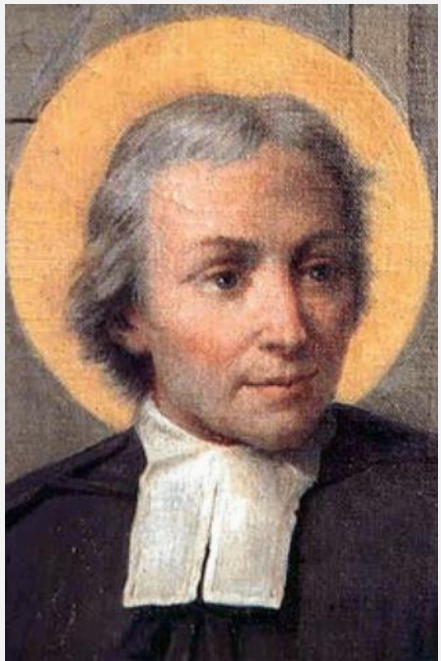
- My/ June – Focused lessons in PSHCE
- Thurs 13<sup>th</sup> Oct – BBC careers roadshow
- Thurs 10<sup>th</sup> Nov – Your future career fair (throughout the school day)
- June/ July – Post 16 college visits



# Collective Worship



De La Salle School



- Every morning in form time and assembly
- Themed based on church calendar and wider events
- At least one extended form time per week
- All students expected to be involved





# The future...



De La Salle School

THE MOST IMPORTANT KEY  
TO SUCCESS  
IS HAVING THE DISCIPLINE  
TO DO WHAT YOU KNOW  
SHOULD BE DONE  
EVEN WHEN YOU DON'T FEEL  
LIKE DOING IT

- Working together to get the best outcomes for your child
- Working together to keep them safe and happy
- Working together to build resilience so that they can go on and become independent young people with a fulfilled life







## Our Motto



De La Salle School

“The standard you  
walk past is the  
standard you  
accept”

General David Morrison



Broadening your horizons

# CHALLENGE



## School Life

School Calendar

School Day

Term Dates

Safeguarding

Curriculum

Special Educational Needs

Pastoral Structure

Behaviour and Rewards

Extra Curricular

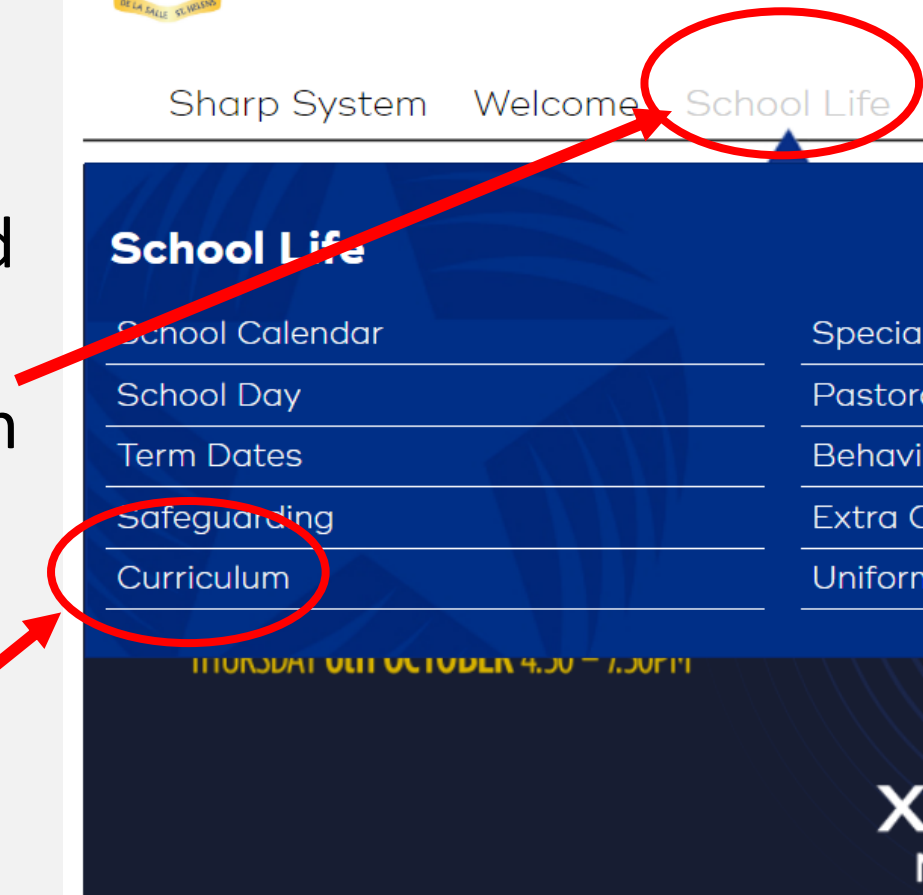
Uniform

Data Protection and GDPR

Equality

Eco-School

How to find curriculum information



THURSDAY OCTOBER 4.30 - 7.30PM

THE ONLY STAR WE ARE MISSING IS YOU

X-CEPTIONAL  
MEN & WOMEN



English

Maths

Science

Religious  
Education

History

Geography

Modern  
Foreign  
Languages

Computing

Art

PE With Dance

Performing  
Arts

Vocational  
Courses



# GCSE English



De La Salle School

Content of the course:

There are two elements to English:

- English Language
- English Literature



# GCSE English



De La Salle School

## English Language

- There are two exams – both examine reading and writing skills
- **Paper 1** – Read one passage then answer 4 questions on it.  
Write a story based on a picture.

**Paper 2** – Read two passages (one modern, one Victorian) then answer 4 questions on them.

A piece of writing where you argue or persuade on a particular topic.



# GCSE English



De La Salle School

## English Literature

Four texts to read and be examined on:

- Romeo and Juliet (Shakespeare)
- The Anthology poetry
  
- Sign of Four (Victorian Novel)
- An Inspector Calls (Modern play)



# GCSE English



De La Salle School

## Revision Materials

- Pupils will be provided with a copy of all set texts to read in class but we would recommend that they might have their own copy at home for revision purposes (look at ebay or Amazon for used copies).
- Revision materials are available through school (CGP). Can be ordered through Parentmail and collected at the Student Services Desk in school.
- We will recommend appropriate websites and Apps – such as BBC Bitesize also Mr.Bruff/ Mr.Salles – on YouTube - PixL





# GCSE English



De La Salle School

## Revision Techniques:

- Make it manageable – e.g. Look at one character at a time – create quizzes
- Create notes on themes/ characters – understand what is expected of you
- Five-a-days will help
- Use Homework to your advantage
- Don't just buy the revision books - you need to use them!
- Don't just wait until the week before the exams – a little and often



# GCSE Science



De La Salle School

## What do I revise for science?

### BBC Bitesize:

- Choose GCSE-AQA-trilogy (for combined science) or AQA Biology/ Chemistry/ Physics for triple award.
- Bitesize is conveniently arranged into the same topics we deliver. You can therefore focus on your weakest topics.
- Revision notes/ Videos & quizzes that are marked are available for each topic.
- Most pupils find bitesize really user friendly and easy to navigate.



# GCSE Science



De La Salle School

## What do I revise for science?

### Seneca Learning:

- These offer revision notes with interactive questions and link to videos to help you revise.
- You can choose areas of a topic to select and even produce a test to print out or complete on your device.
- You can also select the required practical's (new edition) to focus on the investigation skills.
- All answers are marked with instant feedback.



# GCSE Science



De La Salle School

## What do I revise for science?

### Microsoft Teams:

Your teacher may upload several resources for revision. These may include:

- A list of topics that you can perform a RAG analysis to identify your weakest topics
- Pixl know it & answer it powerpoint for as many topics as required.
- Past papers with mark schemes and proper exam practice and informative feedback for examiners.
- Mastery booklets with lots of practice questions for a particular unit.



# GCSE Science



De La Salle School

## What do I revise for science?

**Freesciencelessons.co.uk:**

- You tube has all kinds of videos ...
- However F.S.L offer 3 or 4 minute videos for most topics we follow at GCSE science.
- Videos have visual materials as well as audio commentary
- Videos are accurate and specific.
- Really good if short of time or you want a quick overview of a particular area of science.



# GCSE Science



De La Salle School

## Exam Skills: before and exam but especially before mocks ...

### PLANNING AHEAD:

- Exams can be stressful, so ... **PLAN AHEAD**
- You will get an exam timetable and you should plan your **REVISION SCHEDULE** weeks before giving enough time to each subject.
- Make sure you are organised **ALL EQUIPMENT** needed: ruler; calculator; spare pens etc. Know your location and your seat number.
- Finally **SLEEP/ HYDRATE/ EXERCISE** and **A GOOD DIET** is essential preparation to.



# GCSE Science



De La Salle School

## Sample Assessment Materials:

Use past papers and sample assessment materials are these are very useful.

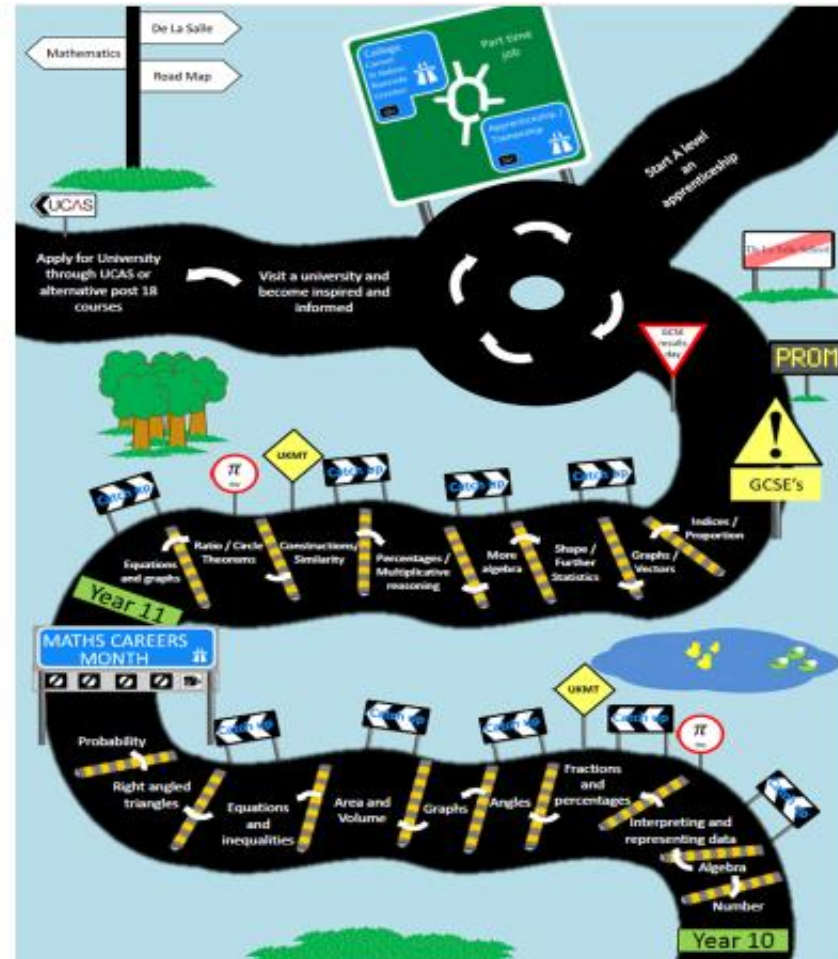
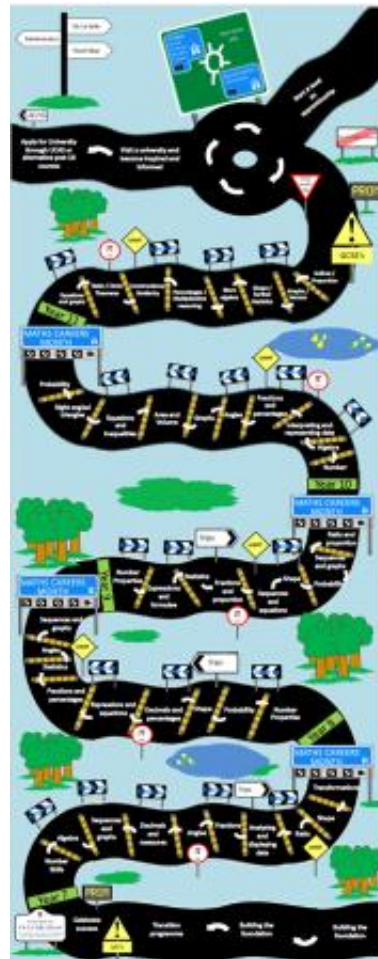
- They show the **STYLE** of questions you will be answering and are a good way of practicing your timing too.
- It is vital you also look at the **MARK SCHEMES** to see how marks are awarded and the terminology required for each mark.
- You will start to understand why **MARKS WERE NOT AWARDED** and what the examiners are looking for. They can be accessed via the AQA Website



# GCSE Science



# De La Salle School







# GCSE Mathematics



De La Salle School

**OCR**  
Oxford Cambridge and RSA

**Tuesday 11 June 2019 – Morning**

**GCSE (9–1) Mathematics**

J560/03 Paper 3 (Foundation Tier)

Time allowed: 1 hour 30 minutes

**F**

You may use:

- a scientific or graphical calculator
- geometrical instruments
- tracing paper

Please write clearly in black ink. Do not write in the barcodes.

Centre number

First name(s) \_\_\_\_\_ Candidate number

Last name \_\_\_\_\_



# GCSE Mathematics



# De La Salle School



Paper		Marks Available
Paper 1	Calculator paper	100 marks
Paper 2	Non-calculator paper	100 marks
Paper 3	Calculator paper	100 marks



# GCSE Mathematics



De La Salle School

Preparing for the GCSE exam in maths. What we are doing!

- Regular assessment using exam papers
- Tracking pupil progress
- Keeping you informed of progress
- Providing effective homework
- Online resources for revision
- Past papers on Show my Homework
- Regular review of pupil setting
- Bespoke interventions
- Parental revision sessions

**OCR**

Oxford Cambridge and RSA

**GCSE (9–1) Mathematics**  
**J560/04 Paper 4 (Higher Tier)**  
Sample Question Paper

**Date – Morning/Afternoon**  
Time allowed: 1 hour 30 minutes



# GCSE Mathematics



De La Salle School

## Preparing for the GCSE exam at home.

### What you can be doing!

- Help your child to start revising maths now
- Help your child prepare effectively for all assessments
- Speak with your child about their progress
- Make sure your child is completing all homework set
- Provide a space for your child to work
- Explore the online resources available so you can direct your child to them now, including past papers
- Keep in touch.





# GCSE Religious Education



De La Salle School

Religious Education

Information Evening

Mrs. J Thompson

Mrs. L Pemberton



# GCSE Religious Education



De La Salle School

All students are required to study Roman Catholic Christianity as the main religion with Judaism as the second religion.

Students follow the Edexcel specification A – Belief and Practice in the 21<sup>st</sup> Century GCSE The Pearson Edexcel GCSE (9–1) in Religious Studies A consists of three externally-examined papers.

## Area of Study 1 – Roman Catholic Christianity

Content overview

- Beliefs and Teachings
- Practices
- Sources of Wisdom and Authority
- Forms of Expression and Ways of Life



# GCSE Religious Education



De La Salle School

## Area of Study 2 – Judaism

Content overview

- Beliefs and Teachings
- Practices

## Area of Study 3 – Philosophy and Ethics Roman Catholic

Content overview

- Arguments for the Existence of God
- Religious Teachings on Relationships and Families in the 21st century



# GCSE Religious Education



De La Salle School

Assessment requirements:

**Paper 1: Area of Study 1 – Roman Catholic Christianity**

*Written examination: 1 hour and 45 minutes*

*50% of the qualification 102 marks*

**Paper 2: Area of Study 2 – Judaism**

*Written examination: 50 minutes*

*25% of the qualification 51 marks*

**Paper 3: Area of Study 3 – Philosophy and Ethics Roman Catholic**

*Written examination: 50 minutes*

*25% of the qualification 51 marks*





# GCSE Religious Education



De La Salle School

## Revision:

- Seneca Learning
- BBC Bitesize (Edexcel)
- GCSE Pod
- Revision guides available on Parent Mail
- Revision sheets on TEAMS
- Blooket



# GCSE Religious Education



De La Salle School

## Top 5 revision tips:

- Learn Key terms. If you don't know the key terms, then you may not be able to access the question
- Use online platforms to help – even if it is just a twenty minute activity
- Create a revision clock and focus on an hour at a time
- Cross match SOWA's across topics! For example – “Let there be light” could be used in the Creation topic in 1.3 (Paper 1) but also topic 1.6 Cosmological argument (Paper 3)
- REST!!!



# GCSE Religious Education



De La Salle School

## Religious Education

For further information please contact:

Mrs. J Thompson

[thompsonj@delasalleschool.org.uk](mailto:thompsonj@delasalleschool.org.uk)



**Mohammed Ali**



De La Salle School

*“Impossible is not a fact. Its an opinion.  
Impossible is not a declaration. It’s a dare.  
Impossible is potential. Impossible is temporary.  
Impossible is nothing.”*