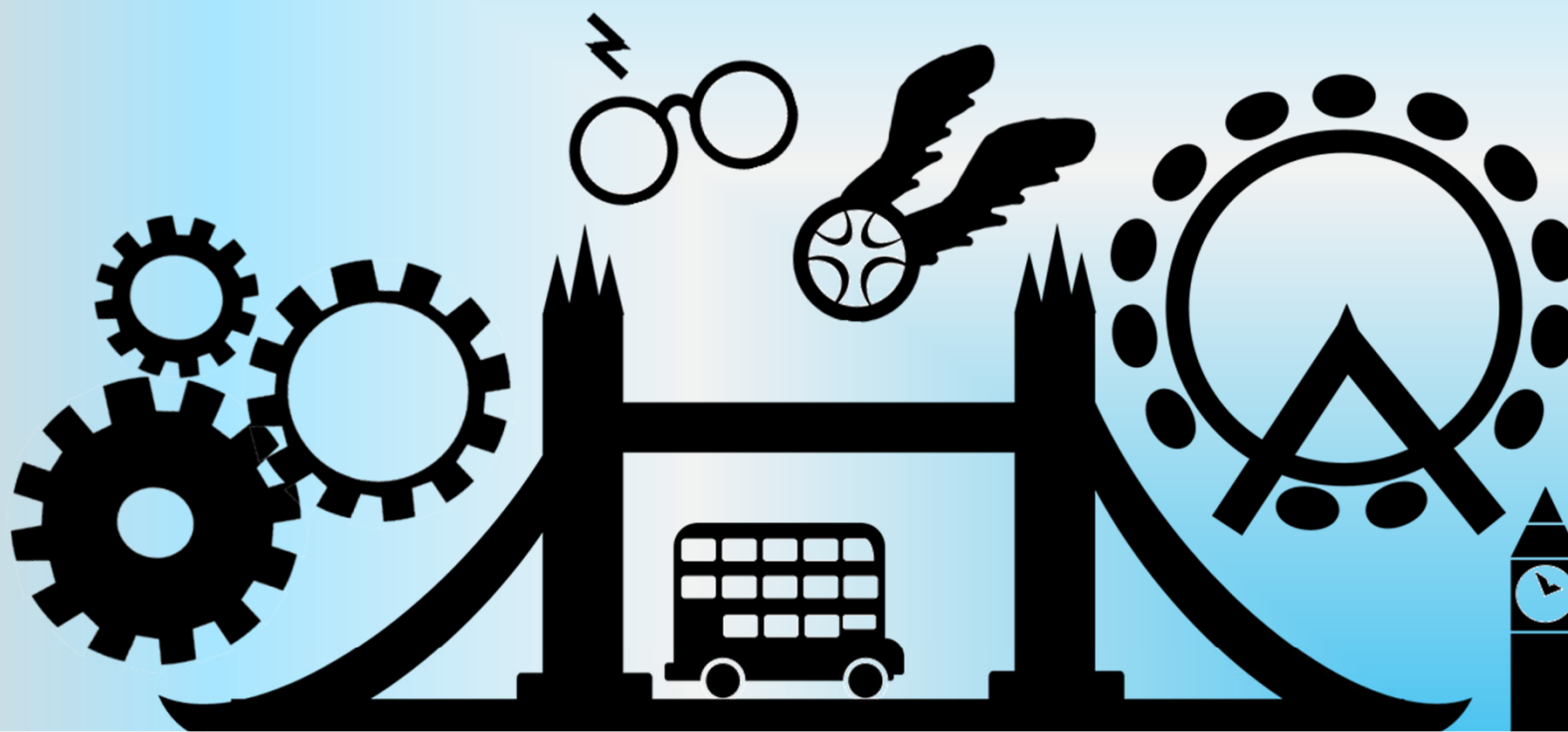


Maths in London



Maths Tour to London

27/06/2022 – 29/06/2022

Maths in London



**Tour
basics**

**Why are
we going?**

**We're on
our way!**

**What will we
see & do?**

**About our
travel company**



Maths in London



**Tour
basics**

**Why are
we going?**

**What will we
see & do?**

**We're on
our way!**

**About our
travel company**



Maths in London



**Tour
basics**

Getting there

We will depart from school by coach on Monday 27th June 2022 at 7am and aim to arrive in London at 12pm.

Please drop your child off at School by 6.45am on the Monday.

Returning home

We will leave Harry Potter Studios at 3pm on Wednesday 29th June and aim to arrive home at 8pm.

Please collect your child from school at this time.



Maths in London



Tour basics

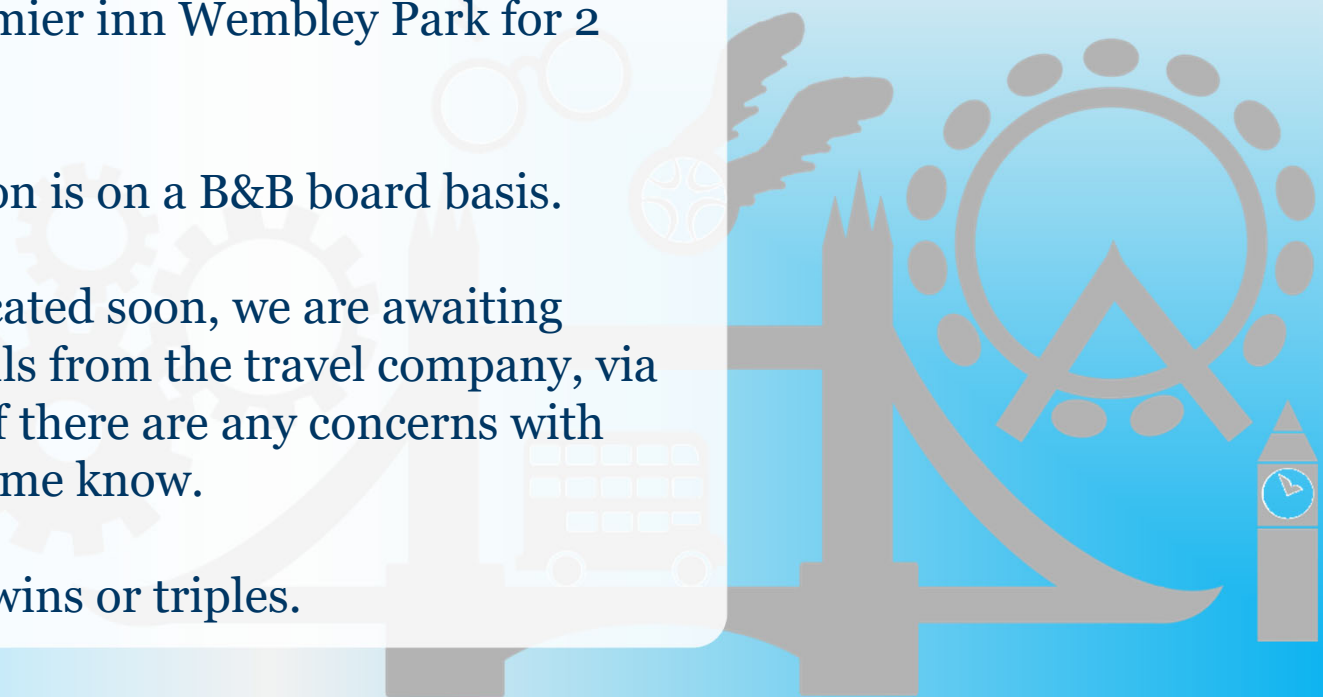
Our accommodation

We will stay at Premier inn Wembley Park for 2 nights.

This accommodation is on a B&B board basis.

Rooms will be allocated soon, we are awaiting some final details from the travel company, via help of pupils, if there are any concerns with these please let me know.

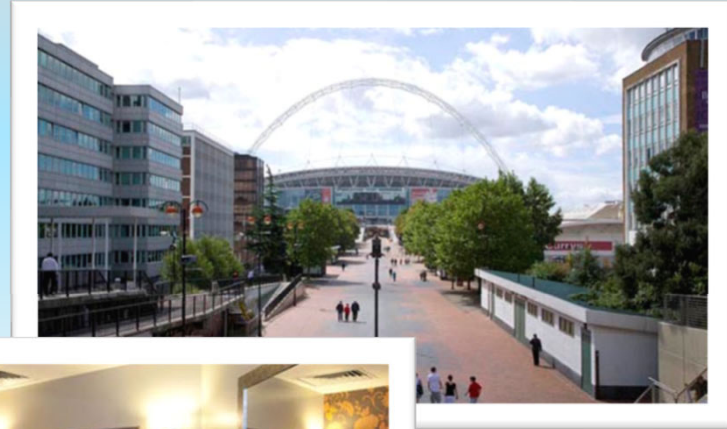
Rooms are either twins or triples.



Maths in London



Tour
basics



Premier Inn London Wembley Park hotel

Central to Wembley Stadium, Wembley Arena, and the London Designer Outlet

Maths in London



**Tour
basics**

Meal arrangements

Breakfast provided by the hotel on the Tuesday and Wednesday mornings.

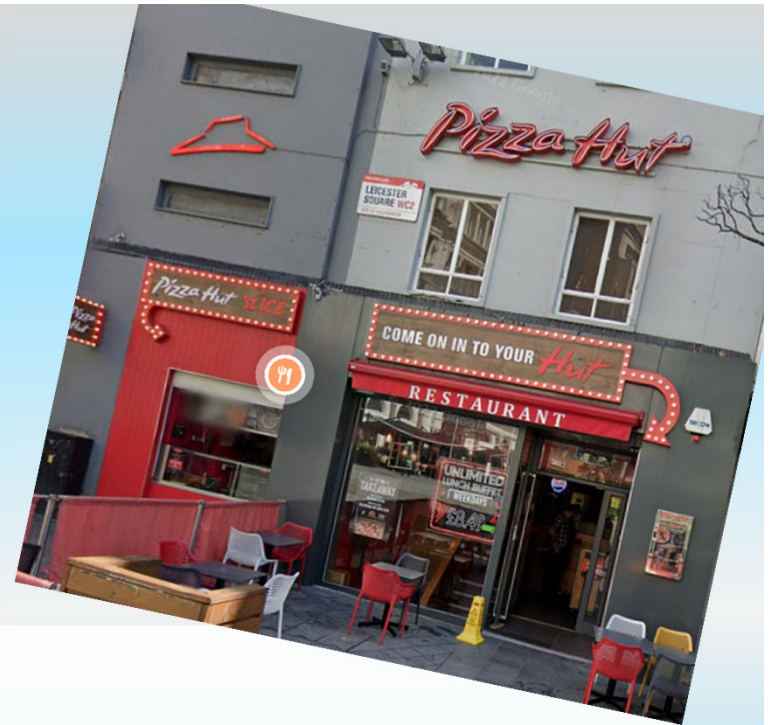
Two evening meals booked out for Monday and Tuesday night.

Lunch provided on Tuesday and Wednesday by the travel company.

Maths in London



Tour
basics



Pizza Hut

Set course from a set menu with a soft drink



Hard Rock Café

Set course from a set menu with a soft drink

Maths in London



Tour
basics



Travel tips – money

Apart from lunch on the first day, all meals are included. Pupils may wish to bring money to buy souvenirs at Bletchley, in London or at Harry Potter Studios.

It is the pupil's responsibility to look after any money that they bring.

Maths in London



Tour basics

Travel tips – packing

The weather in London at this time of year is pretty much the same as here – so keep an eye on the weather forecast and pack appropriately! As such, I recommend that students pack the following essential items for their tour:

Jackets

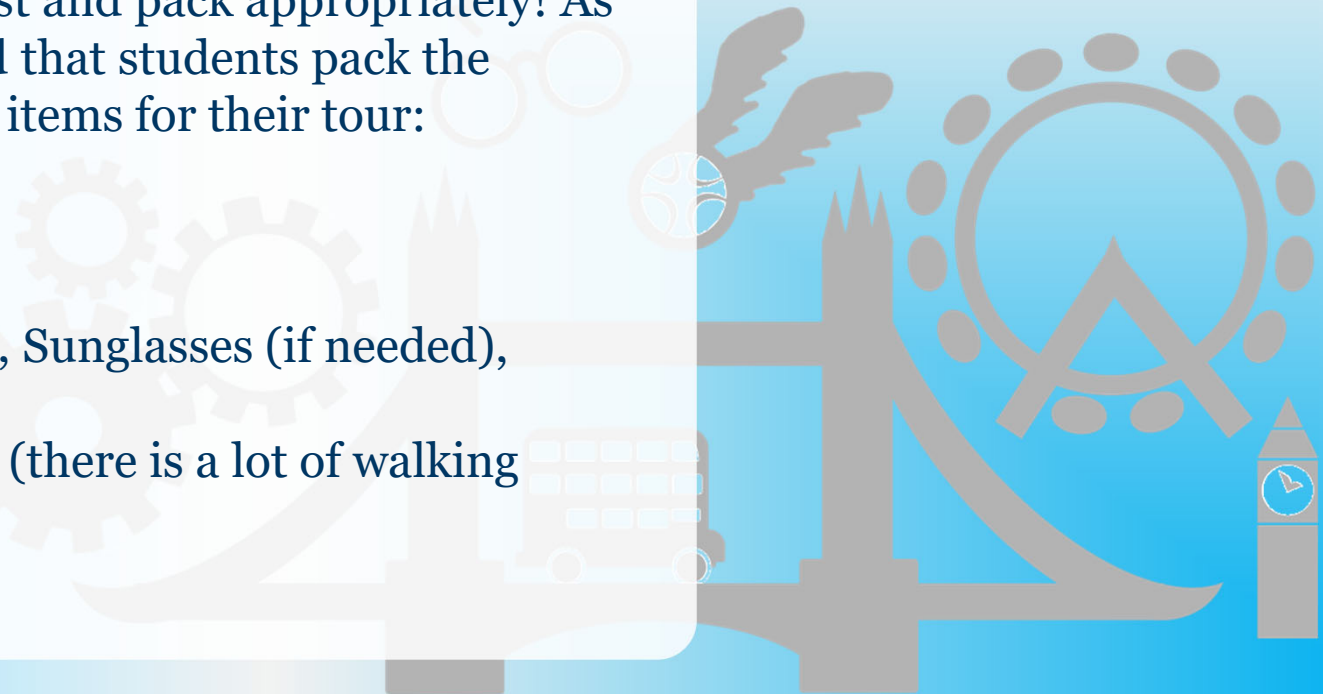
Waterproof coat

Sunscreen, Sunhat, Sunglasses (if needed),

Clothes to wear

Comfortable shoes (there is a lot of walking around places!)

Water bottle



Maths in London



**Tour
basics**

**Why are
we going?**

**What will we
see & do?**

**We're on
our way!**

**About our
travel company**



Maths in London



**Why are
we going?**

- **To encourage and develop understanding of maths.**
- **Brings key topics out of the classroom into a fun environment.**
- **Apply our knowledge to the real world.**
- **To have fun!!**

Maths in London



**Tour
basics**

**Why are
we going?**

**We're on
our way!**

**What will we
see & do?**

**About our
travel company**



Maths in London



What will we
see & do?

Monday

Travelling
Arrive in London
Maths trail around London
Bed

Wednesday

Bletchley Park
London Eye
Bed

Tuesday

Harry Potter Studio Tour
Travel home
Bed!!

Maths in London



What will we
see & do?

Monday

- Leave De La Salle school at 7.00 am
- Pit stop along the way.
- Eat Pack Lunch on route.
- 12pm arrive at the British Museum for the maths challenge
- Walking maths trail from Big Ben to Leicester Square
- Evening meal at Pizza Hut– 6pm
- 7.30pm Coach to Premier Inn
- 8.45pm Check in
- Bed 9.30pm
- Lights out ASAP

Maths in London



**What will we
see & do?**

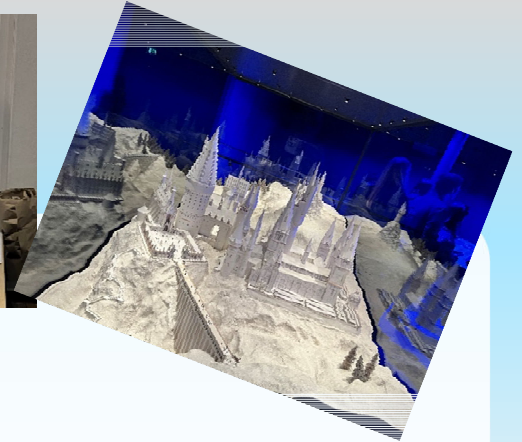
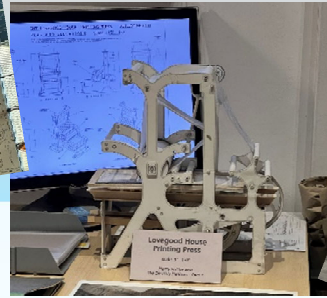
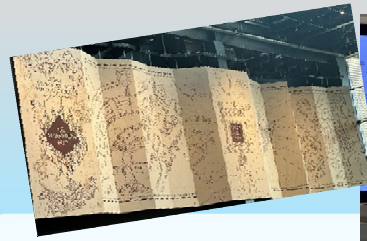
Tuesday

- 7.30am Up and dressed
- 8am Breakfast
- 9am leave for Bletchley Park.
- 10.30am arrive at Bletchley Park
- Walking tour around Bletchley Park
- Lunch (Pack lunch provided)
- 2pm Leave back to London
- 4.30pm London eye Check in
- 5pm London Eye
- Evening meal at Hard Rock Café – 7pm
- 8.30pm Coach to Premier Inn
- 9.30pm Arrive
- Pack
- Bed 10pm
- Lights out ASAP

Maths in London



**What will we
see & do?**



Wednesday

- 7.15am Up and dressed
- 7.45am Breakfast
- 8.30am all packed in the lobby
- 8.45am Load Coach
- 9am Leave London for Harry Potter Studios
- 10.10am Check in at Harry Potter Studios
- 10.30 Tour starts
- Lunch (Pack lunch provided)
- 3pm leave for school.
- Arrive home for around 8pm
- Bed – Lights out ASAP!



Maths in London



**Tour
basics**

**Why are
we going?**

**We're on
our way!**

**What will we
see & do?**

**About our
travel company**



Maths in London



Established 1967 - over 45 years' experience

Government recommended health and safety policy

ABTA and ATOL protected - your payments are insured

Insurance cover and 24-hour medical assistance cover

**About our
travel company**



Maths in London



**Tour
basics**

**Why are
we going?**

**We're on
our way!**

**What will we
see & do?**

**About our
travel company**



Maths in London



Don't forget...

Money and medications etc.

Make sure you have been to the toilet before you set off as school won't be open

Drop your child off at School at 6.45am on Monday 27th June.

Collect your child at De La Salle on Wednesday!

If you have any questions or emergencies whilst your child is away, please contact school.

**We're on
our way!**



Maths in London



@MathsDLS

Any questions?

